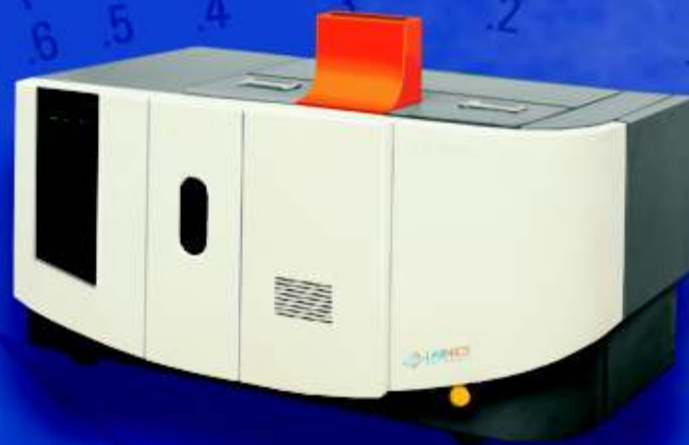


ATOMIC

FLUORESCENCE SPECTROPHOTOMETER



Atomic Fluorescence Spectrometer - Environmental protection type

LAFS-100 - Double Channel

Features:

- ★ Techniques with independent intellectual property.
- ★ Environmental protection type Atomic Fluorescence Spectrometer with "High efficiency Hg-elimination Technique" can decontaminate Hg pollution in lab environment efficiently and protect analyst's health.
- ★ Determination of Hg, As, Sb, Bi, Se, Te, Pb, Sn, Ge, Zn and Cd.
- ★ Quartz atomizer with "full-ceramics infrared heating temperature control" technique has superlong lifetime.
- ★ "Low-temperature atomic Argon-Hydrogen flame auto-ignition" can improve the analysis sensitivity of elements to be determined and reduce memory effect in large degree.
- ★ Advanced spraying jet type hydride /vapor generation gas-liquid separation system and automatic wasteliquid discharge.
- ★ Standard RS-232 port communication; supporting USB interface communication.
- ★ The newest special device of "Gaseous Mercury Determination", the detection limit of which reaches 1ng/m^3 , can determine Hg content in the air, natural gas, lab and working field etc.
- ★ The newest special device with special technology, "Determination of Ultra-trace Hg in Water Samples" is adopted, with detection limit up to $0.0004\ \mu\text{g/l}$, realizing direct determination of ultra-trace Hg in Class I and II ground water and sea water.
- ★ Realize two or three elements determination simultaneously.
- ★ Newly designed light closed optical alignment system is adopted.
- ★ Gas line auto-control, auto-protection and auto-alarm functions incorporated.



Software operation:

- ★ Fluorescence signal profile real-time display and overlap.
- ★ Graphics scale auto zooming.
- ★ Working curve auto fitting, multi-graphics display.
- ★ Multi-functions of single-step running, continuous running and auto-sampling operation.
- ★ All kinds of analysis program, analysis data and signal graphics can be stored and printed out.
- ★ Several kinds of report format are available.
- ★ Expert system provides physical parameters of various elements, preparation of standard solutions, sample preparations and interference elimination.

Specification:

Element	D.L	RSD	Linear Range
As, Sb, Bi, Se, Te, Pb and Sn	$<0.03\ \mu\text{g/L}$	1%	10^3
Hg	$<0.003\ \mu\text{g/L}$		
Cd	$<0.001\ \mu\text{g/L}$		
Zn	$<2.0\ \mu\text{g/L}$		
Ge	$<0.3\ \mu\text{g/L}$		
Hg in gas state (air, natural gas, lab, testing site etc)	$<1.0\ \text{ng/m}^3$	5%	10^2
Hg in water sample (Sea water, surface water etc)	$<0.0004\ \mu\text{g/L}$	2%	
Catalog No.	32260101		

Accessories	Catalog No.
Special Device for gaseous mercury determination	32260111
Special device for ultra-trace Hg determination	32260112
AS-10 Autosampler	32260113
Special AF Lamp	32260114
KBH4 (Content more than 98%)	32260115



Labnics Equipment

43040 Christy St., Fremont, CA 94538 USA,

Toll Free : (877) 620 9992

Tel. : (925) 271 4322

Fax : (925) 886 0400

Email : info@labnics.com Website : www.labnics.com